

# British Market Council – Mission to the UK

20<sup>th</sup> November 2023

**Will Hitchcock**  
Founder & CEO

---

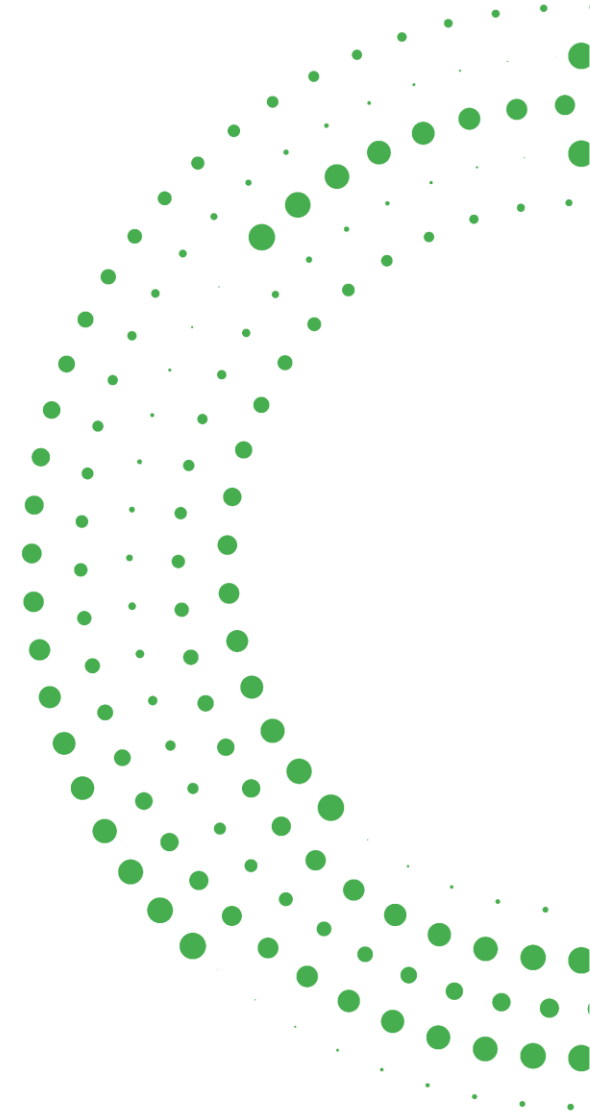


**above**  
Power from data.

# Two opportunities...

To invest in a fast-growing data and digital services provider to the utility scale solar industry

To leverage market leading innovative solutions to accelerate and de-risk your ambitions in the solar industry.



# About Above

Founded in 2016 by Will Hitchcock, Above pioneered the use of drones within the utility scale solar industry.

Leveraging AI and computer vision, Above is transforming the way solar assets are designed, constructed and operated.

Delivering disruptive technology across the solar actor ecosystem and leading the digitalisation transformation as the industry grows exponentially.

**€50 Billion**

In inspected  
asset value

**+1500**

Software  
subscribers

**+500**

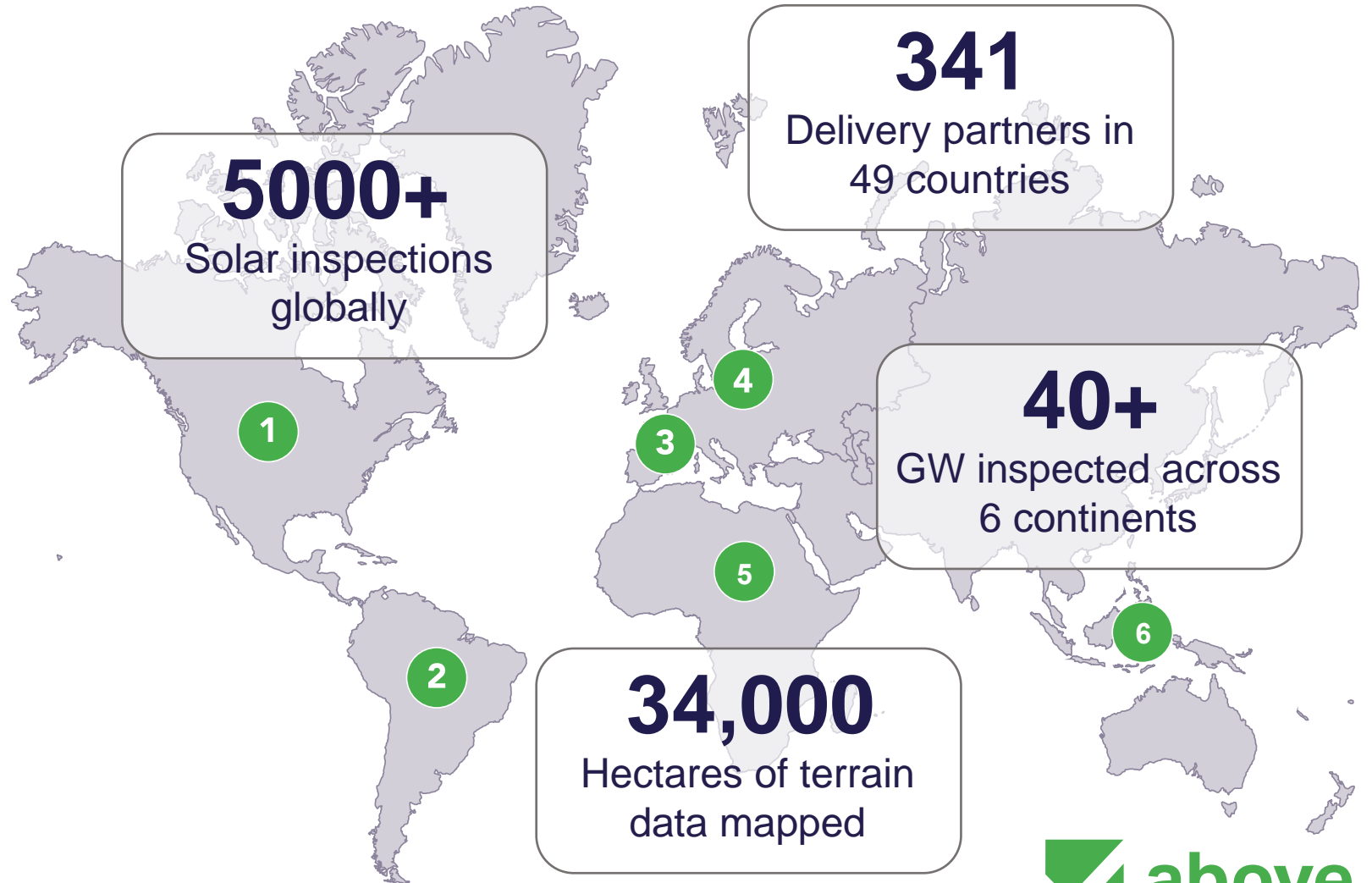
Companies using  
Above's solutions

Accredited with



# Our global presence

- 1 North America**  
Regional Manager North America  
Technical Account Manager
- 2 Central & South America**  
Regional Manager Latin America
- 3 Southern Europe**  
Regional Manager Southern Europe  
Technical Account Manager
- 4 Northern Europe**  
Regional Manager Northern Europe  
Technical Account Manager
- 5 Middle East & Africa**  
Regional Manager MEA
- 6 Asia Pacific**  
Regional Manager APAC  
Technical Account Manager



# Unprecedented Industry challenges

Solar companies are growing quickly – portfolios, people and geographies.

---

Assets are getting bigger, much bigger – impacting all stages of the lifecycle

---

Assets life expectancy is increasing with limited improvement in component and construction quality

---

Extreme weather events are becoming more frequent with limited ways of mitigating asset risk

---

**20 years in 3**

Solar deployment

**80%**

Human resource

**70%**

Less than 5 years old

**83%**

In last 20 years



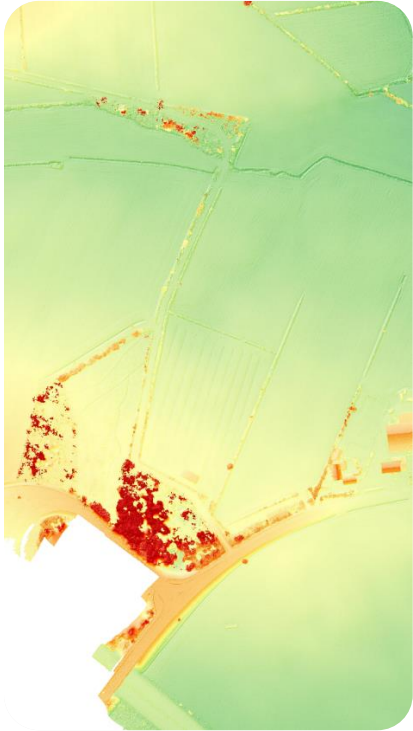
Power from data.

# What we do

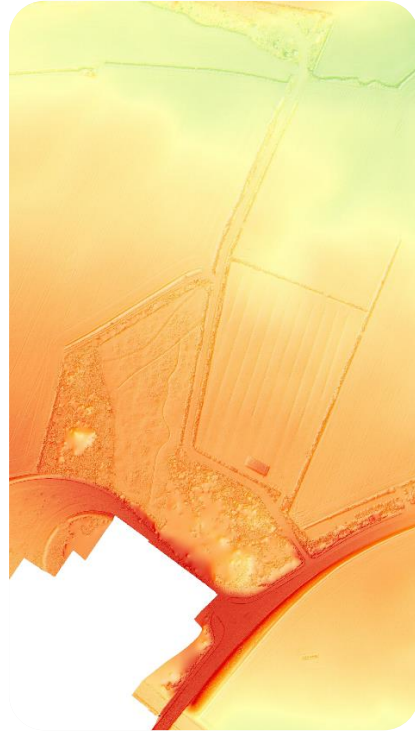
Above provides a holistic view of the solar asset health throughout the entire lifecycle. Using aerial, mobile and specific test data.



# Aerial Topographic Mapping



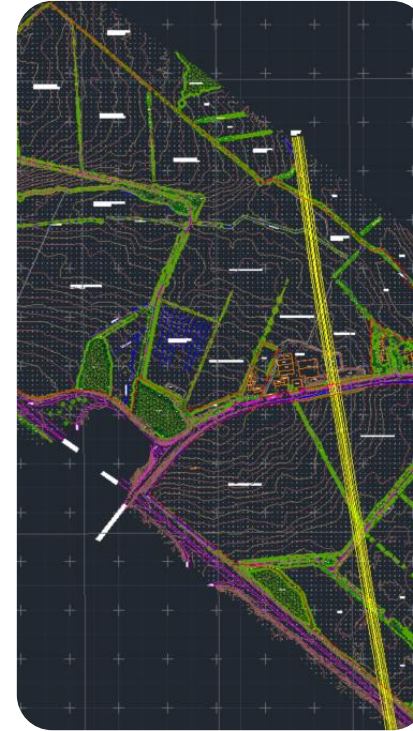
Digital Surface Model



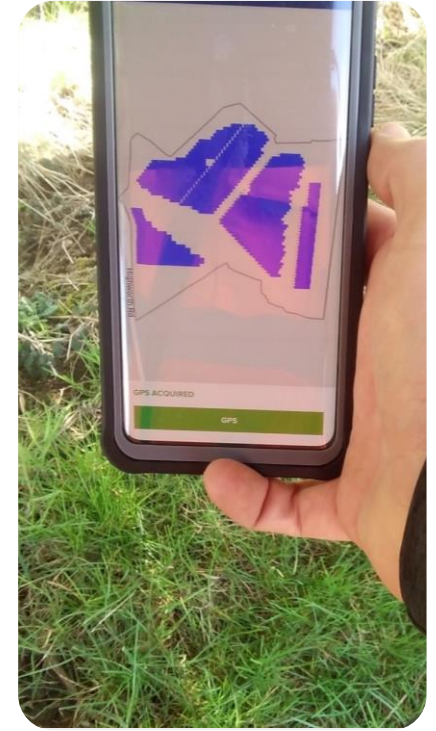
Digital Terrain Model



Orthomosaic



Linework/2D CAD



Optional: Enhance topographic data using digital tools

# Construction and commissioning

Forensic oversight throughout the build



The screenshot shows a web-based interface for 'Construction monitoring' of a solar farm. The main area is a map with several overlaid layers: an orthomosaic, CAD drawings, and PV infrastructure. A central building is labeled 'Substation 5'. The interface includes a left sidebar with navigation icons, a top header with the project name, and two side panels. The 'Map layers' panel on the left has sections for 'Orthomosaic', 'Main drawings', 'PV infrastructure', and 'Annotations', each with a list of items and checkboxes. The 'Event dates' panel on the right shows a list of dates from 2022-03-25 to 2022-10-19, with radio buttons for selection. Two green arrows point to the 'Annotations' section in the left panel and the 'Event dates' panel in the right panel.

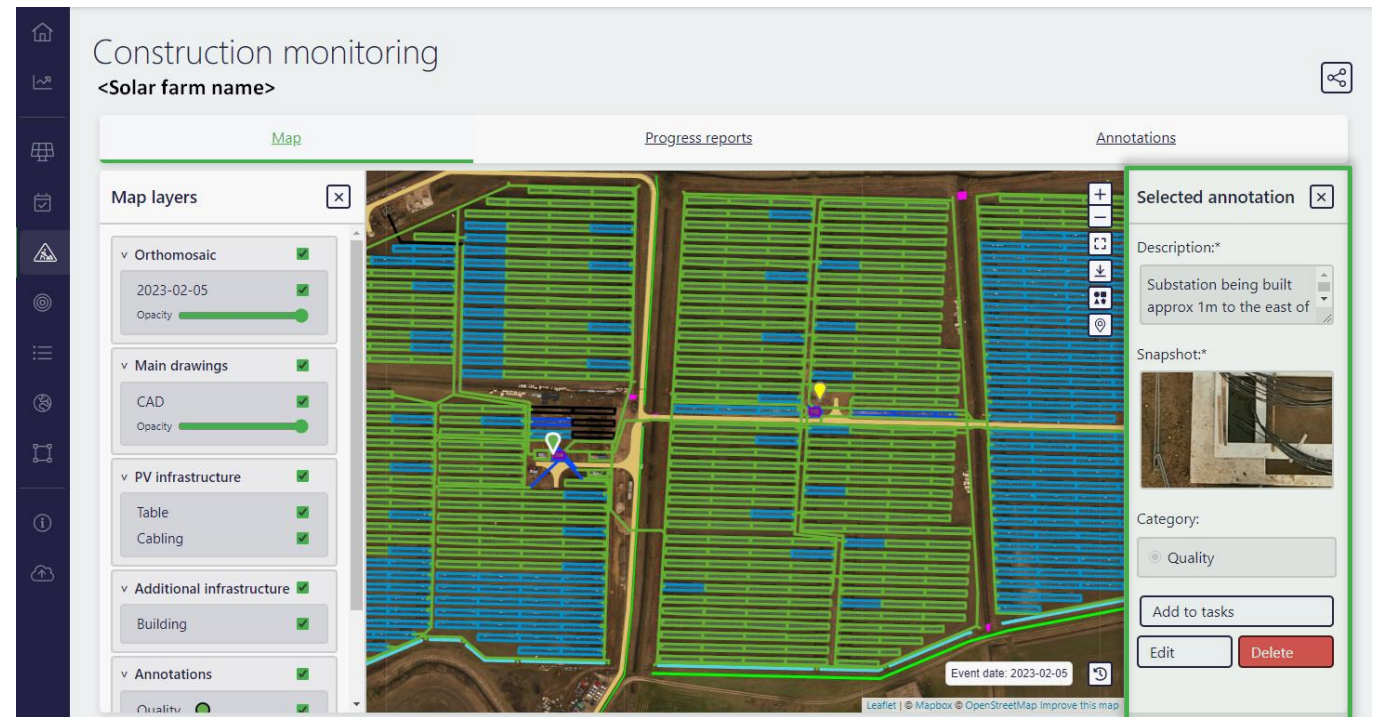
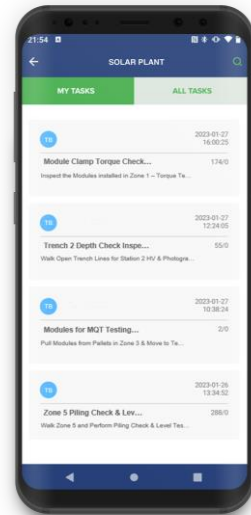
- Toggle different map layers
  - Site Image (orthomosaic)
  - CAD
  - PV infrastructure
  - Annotations
- Focus on specific site infrastructure
- Easily switch between dated solar site events
- Annotate items to be followed up on site



# Construction and commissioning

## Mobile tools

- Collect serial numbers and make annotations across the site and over time
- Annotate in different categories
  - Quality
  - Safety
  - Status
  - Other
- Use annotations to create tasks to be followed up on site with mobile application EyeSite.



# Operations – component condition monitoring

High volume and well-orchestrated data collection technology enables credible condition monitoring and predictive analytics.

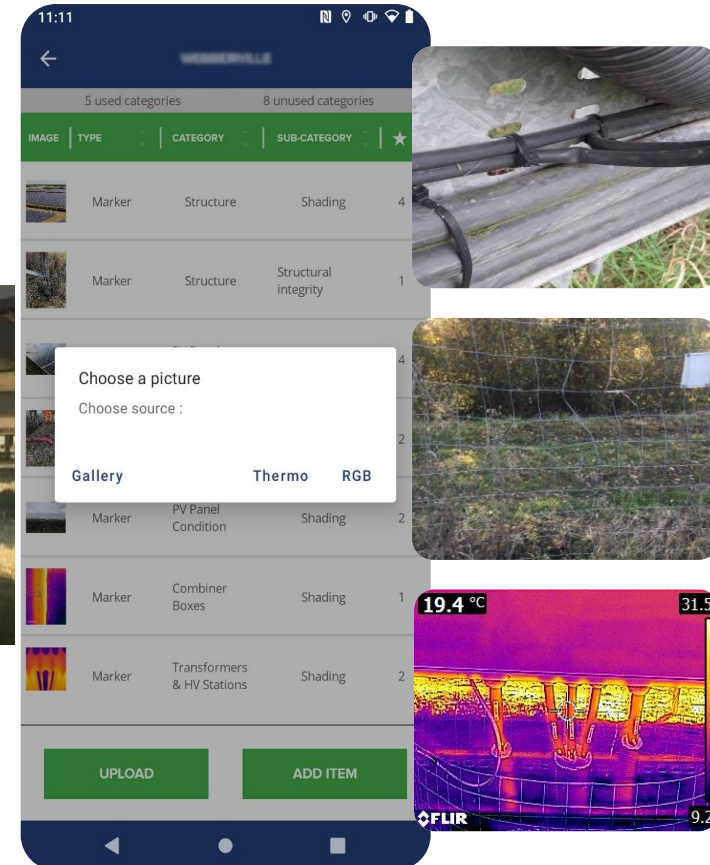
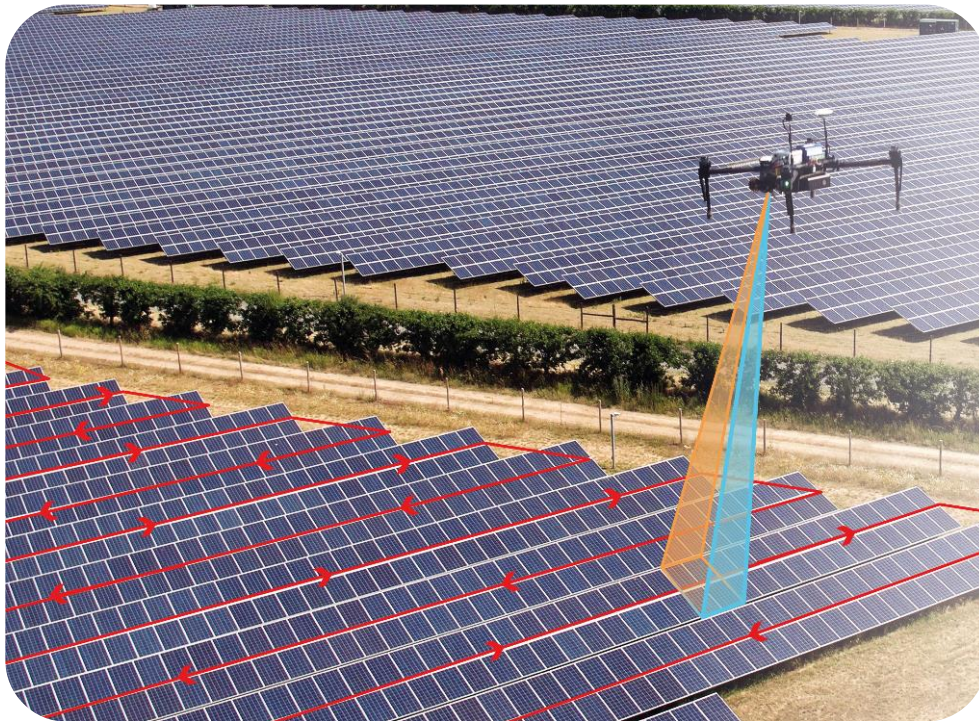




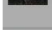


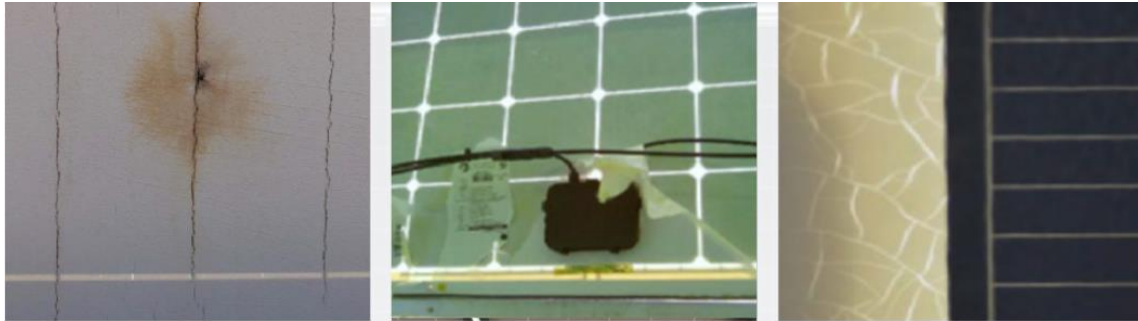
IMAGE	TYPE	CATEGORY	SUB-CATEGORY	★
	Marker	Structure	Shading	4
	Marker	Structure	Structural integrity	1
	Marker	PV Panel Condition	Shading	2
	Marker	Combiner Boxes	Shading	1
	Marker	Transformers & HV Stations	Shading	2

Choose a picture  
Choose source :  
Gallery      Thermo      RGB

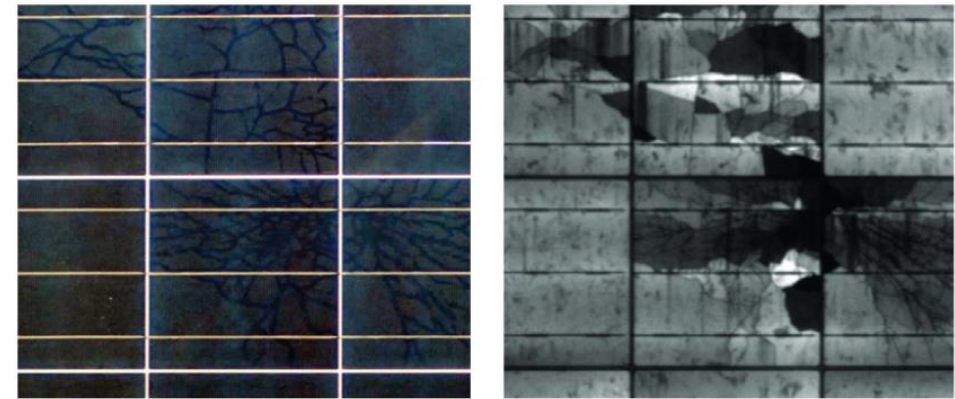
19.4 °C      31.5  
FLIR      9.2

# Capturing defects early and minimise power losses

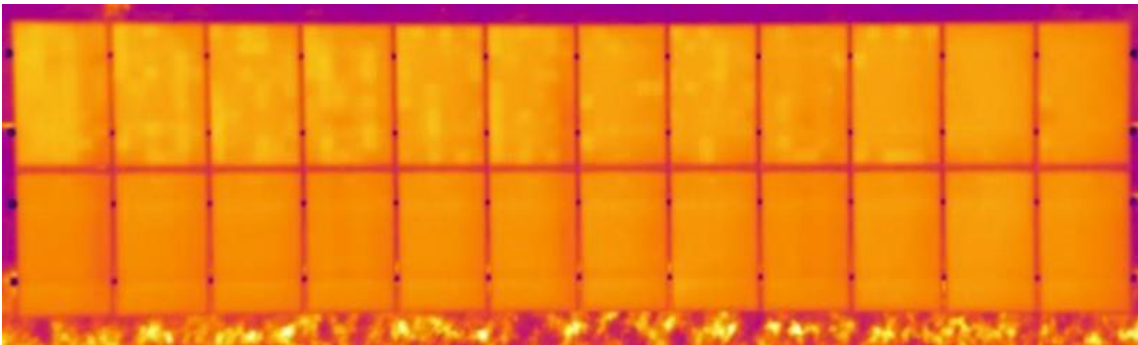
Backsheet failure



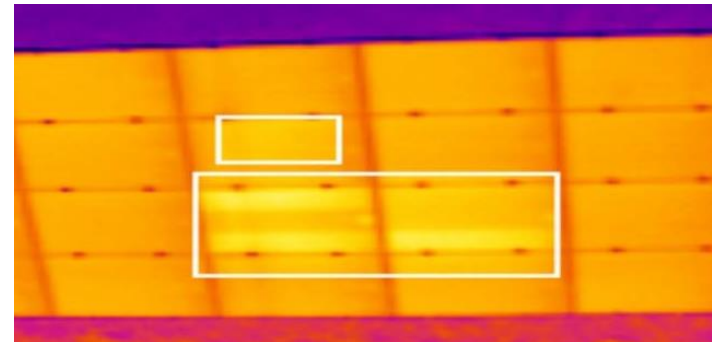
Microcracks



Potential Induced Degradation



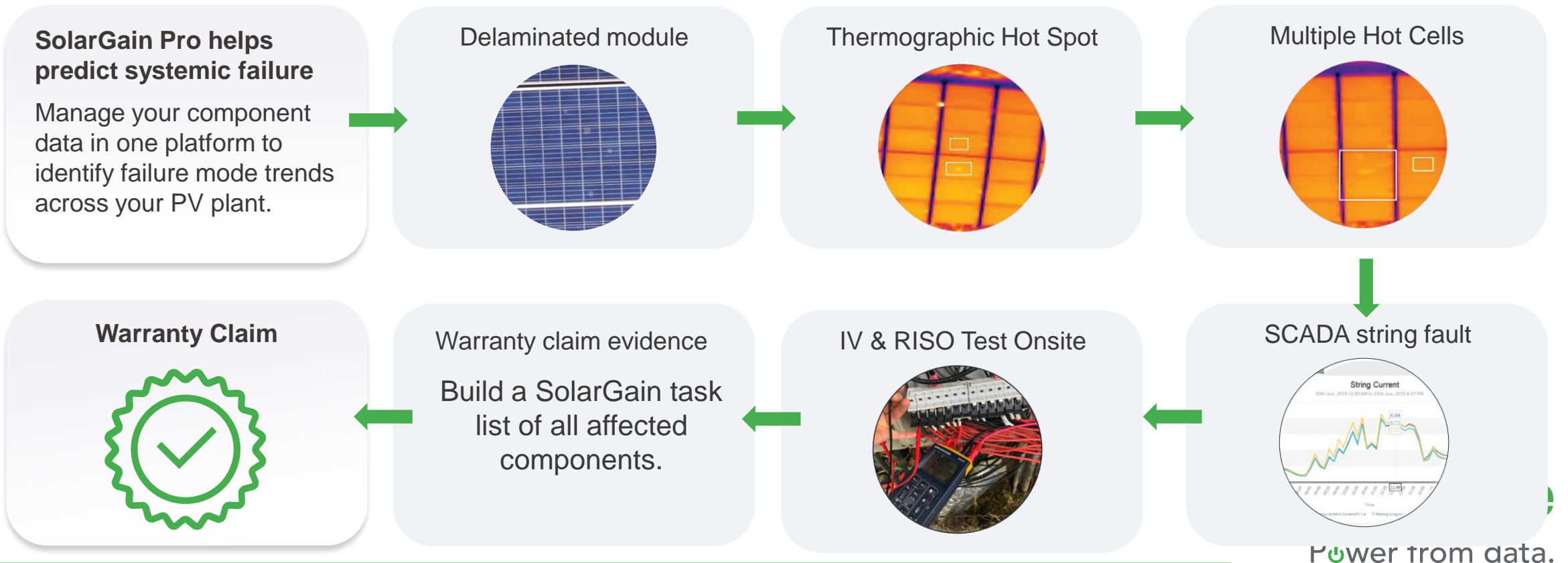
Substring failures



# Correlate previously siloed data sets

Keeping a historic record of component data

An example of how combining data can help you be prepared for component warranty claims and systemic component failure.



# Trusted by....



# New services in development

Autonomous drones and Inspections-as-a-service (IaaS)



Big Data value to new markets and Data-as-a-service (DaaS)

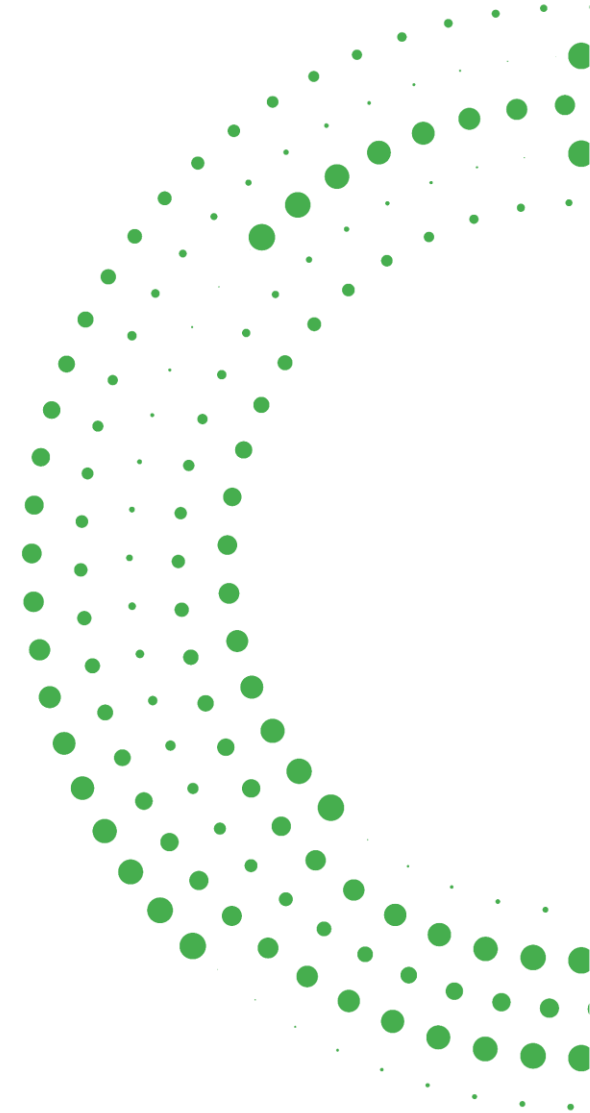


# Invest

An exciting opportunity to invest in a fast growing and innovative data and digital services provider - Help us accelerate bringing our technology to market

# Utilise

De-risk your growth of utility scale solar through leveraging Above's market leading and innovative solutions.



Thank you

[www.abovesurveying.com](http://www.abovesurveying.com)